



Industrial/Commercial Division
Fulton Heating Solutions, Inc.

Product Data Submittal

Fulton Models: VTG-3000

Fulton VANTAGE Commercial/Industrial Hydronic Heating Boilers

Dimensions

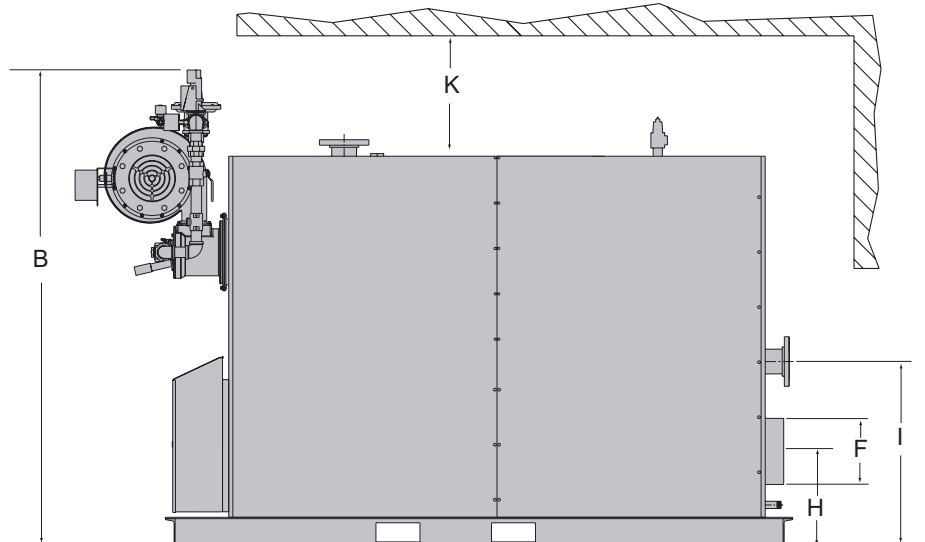
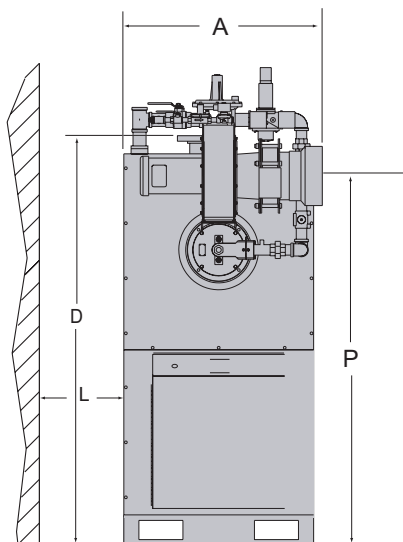
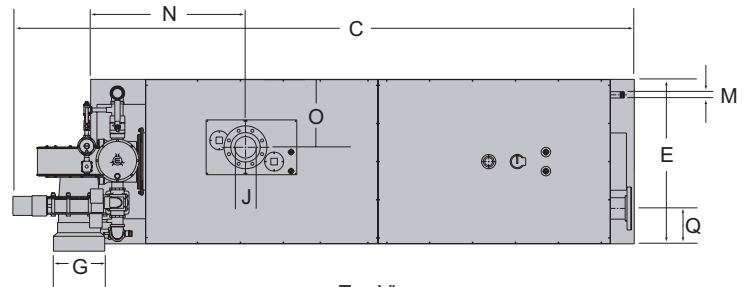
Model VTG		3000
A. Boiler Width w/Blower Adapter	IN	36
	MM	915
B. Boiler Height w/Gas Train	IN	86.5
	MM	2197
C. Boiler Depth w/Blower & Gas Train	IN	130.5
	MM	3315
D. Boiler Height w/o Blower & Gas Train	IN	74.25
	MM	1886
E. Boiler Width w/o Blower Adapter	IN	34.5
	MM	877
F. Flue Outlet Diameter	IN	12
	MM	305
G. Air Inlet Diameter	IN	10
	MM	254
H. To Center of Flue Outlet	IN	17.25
	MM	438
I. To Center of Return Water Inlet	IN	33.5
	MM	851
J. Water Inlet/Outlet Diameter	IN	4
	MM	102
K. Min. Clearance to Ceiling	IN	24
	MM	610
L. Min. Clearance to either Side Wall (See Note 1)	IN	12
	MM	458
Min. Clearance to Front	IN	36
	MM	915
Min. Clearance to Rear	IN	24
	MM	610

Model VTG		3000
M. Condensate Drain Diameter	IN	1
	MM	25.4
N. Water Outlet from Front of Skid	IN	32.5
	MM	826
O. Water Outlet from Side	IN	14.25
	MM	362
P. To Center of Air Inlet	IN	66.8
	MM	1697
Q. Water Inlet from Side	IN	7.5
	MM	190.5

Specifications and Dimensions are approximate and for reference only.
We reserve the right to change specifications and/or dimensions.

NOTE:

1. Consult factory for 1" side clearance.



Specifications

972 Centerville Road
 Pulaski, New York USA 13142
 Call 315-298-5121
 Fax 315-298-6390
 web site: www.fulton.com

Industrial/Commercial Division
Fulton Heating Solutions, Inc.

Model VTG		3000
Fuel		Natural Gas See Note 1
Input	BTU/Hr. KCAL/Hr.	3,000,000 755,988
Output	BTU/Hr. 120°F in—140°F out KCAL/Hr. 49°C in— 60°C out	2,640,000 665,269
Fuel Consumption @ rated capacity:		
Natural Gas	FT3/Hr. M3/Hr.	3000 85
Propane	FT3/Hr. M3/Hr.	1190 33.7
Unit Size/Output	BHP KW	77 774
Electrical Requirements	Amps 230V,50/60 CY.3 Phase 460V,50/60 CY.3 Phase	7.6 3.8
MAWP	PSI BAR	160 11.0
Water Content	Gal Liters	215 818
Boiler Connection Sizes		
Safety Valve Inlet	IN MM	1.25 31.8
Safety Valve Outlet	IN MM	1.5 38.1
Water Inlet & Outlet	IN MM	4 104
Air Inlet	IN MM	10 254
Gas Inlet	IN MM	2 51.8
Exhaust Outlet	IN MM	12 304
Approximate Weights		
Dry Weight	LB KG	5,200 2,363
Shipping Weight	LB KG	5,700 2,590
Operating Weight	LB KG	7,000 3,181
Floor Loading	LB/FT2 KG/M2	260 1,235

NOTES:

1. The turndown ratio is 5:1.

Air Intake Supply & Exhaust Vent Piping+

	No. of Feet of Standard Dia. Pipe	No. of 90° Elbows
Min. length air intake supply piping	0	0
Max. length air intake supply piping	35 (10.7m)	4
Min. length exhaust vent piping	0	0
Max. length exhaust vent piping	35 (10.7m)	4

+Screened Termination Couplings inapplicable.
 Consult factory for longer runs.

Installation Notes

- Natural Gas Pressure Required: 18" W.C., consult factory for lower gas pressure.
- One condensate drain can be used for up to 4 boilers. The condensate drain requires a fresh water connection. The connection is a 1/4" compression fitting and the water pressure shall be less than 100 PSI.