



Industrial/Commercial Division
Fulton Heating Solutions, Inc.

Product Data Submittal

Fulton Model: VTG-4000

Fulton VANTAGE Commercial/Industrial Hydronic Heating Boilers (Standard Burner)

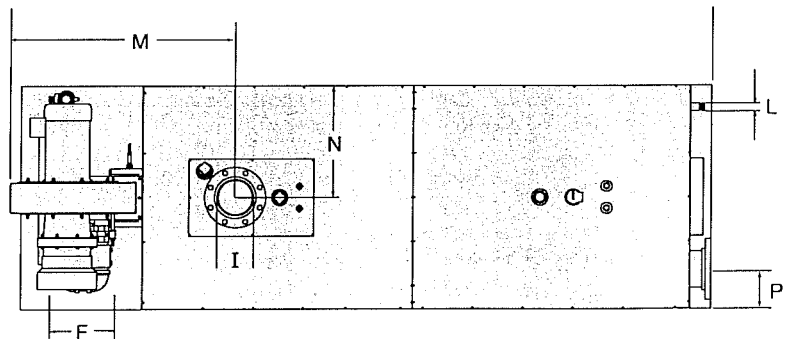
Dimensions

A. Boiler Width	IN	40.5
	MM	1028
B. Boiler Height w/ Blower	IN	90.6
	MM	2301
C. Boiler Depth w/ Blower	IN	126
	MM	3200
D. Boiler Height w/o Blower	IN	79.6
	MM	2022
E. Flue Outlet Diameter	IN	14
	MM	356
F. Air Inlet Diameter	IN	12
	MM	305
G. To Center of Flue Outlet	IN	18.75
	MM	476
H. To Center of Return Water Inlet	IN	35
	MM	889
I. Water Inlet/Outlet Diameter	IN	6
	MM	152
J. Min. Clearance to Ceiling	IN	24
	MM	610
K. Min. Clearance to either Side Wall *	IN	12
	MM	458
Min. Clearance to Front	IN	36
	MM	915
Min. Clearance to Rear	IN	24
	MM	610
L. Condensate Drain Diameter	IN	1
	MM	25.4

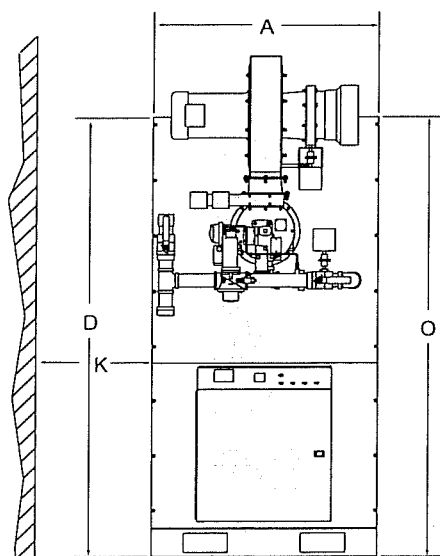
M. Water Outlet from Front of Skid	IN	38.6
	MM	981
N. Water Outlet from Side	IN	20.25
	MM	514
O. To Center of Air Inlet	IN	79.8
	MM	2027
P. Water Inlet from Side	IN	7
	MM	179

Specifications and Dimensions are approximate and for reference only. We reserve the right to change specifications and/or dimensions.

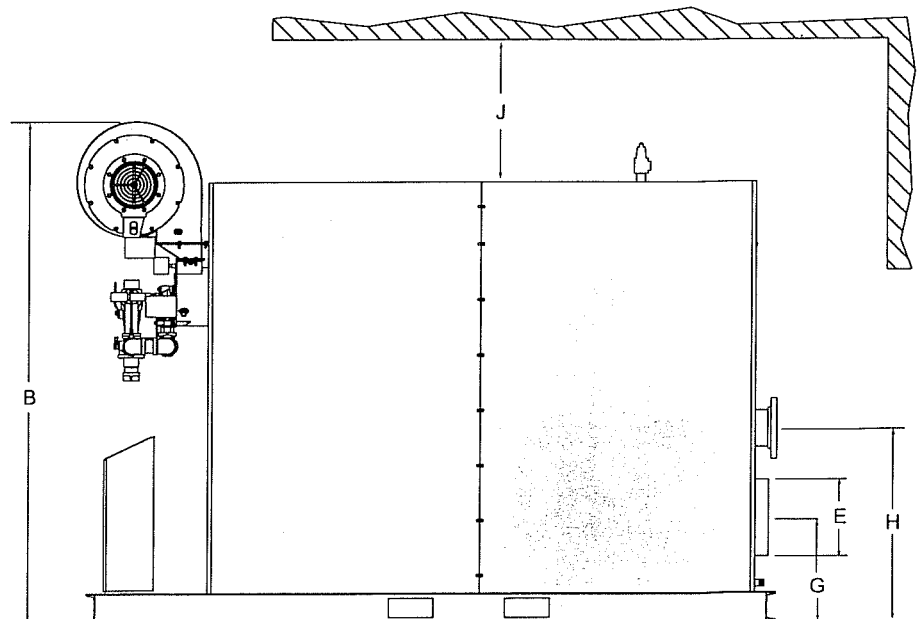
* Consult factory for 1" side clearance.



Top View



Front View



Right Side View

Specifications

Model		VTG-4000
Fuel		Nat. Gas or LP *
Input	BTU/Hr.	4,000,000
	KCAL/Hr.	1,007,984
Output	BTU/Hr. 120°F in—140°F out	3,440,000
	KCAL/Hr. 49°C in— 60°C out	806,870
Fuel Consumption @ rated capacity:		
Natural Gas	FT3/Hr.	4000
	M3/Hr.	113
Propane	FT3/Hr.	1587
	M3/Hr.	449
Unit Size/Output	BHP	102
	KW	1008
Electrical Requirements		
230V,60Hz,3 Phase	Amps	15.2
460V,60Hz,3 Phase	Amps	7.6
MAWP	PSI	160
	BAR	11.0
Water Content	Gal	240
	Liters	911
Boiler Connection Sizes		
Safety Valve Inlet	IN	1.25
	MM	31.8
Safety Valve Outlet	IN	1.5
	MM	38.1
Water Inlet & Outlet	IN	6
	MM	152
Air Inlet	IN	12
	MM	305
Gas Inlet	IN	2
	MM	50.8
Exhaust Outlet	IN	14
	MM	356
Approximate Weights		
Dry Weight	LB	5,800
	KG	2,636
Shipping Weight	LB	6,300
	KG	2,864
Operating Weight	LB	7,800
	KG	3,545
Floor Loading	LB/FT ²	223
	KG/M ²	1,060

*The turndown ratio is 5:1.

Installation Notes

1. Natural Gas Pressure Required: 11.5" W.C., consult factory for lower gas pressure applications. Minimum Propane Gas Pressure Required: 17" wc.
2. One condensate drain can be used for up to 3 boilers. The condensate drain requires a fresh water connection. The connection is a 1/4" compression fitting and the water pressure shall be less than 100 PSI.

Air Intake Supply & Exhaust Vent Piping+

	No. of Feet of Standard Dia. Pipe	No. of 90° Elbows
Min. length air intake supply piping	0	0
Max. length air intake supply piping	35 (10.7m)	4
Min. length exhaust vent piping	0	0
Max. length exhaust vent piping	35 (10.7m)	4

+ Screened Termination Couplings inapplicable. Air intake and vent sizes may vary based on the installation. Please contact Fulton for vent sizing assistance. Consult factory for longer air intake and exhaust run requirements.



Fulton Boiler Works, Inc.
 3981 Port Street, Box 257
 Pulaski, New York USA 13142
 Call: 315-298-5121
 Fax: 315-298-6390
 www.fulton.com